

**Product Name:** DynaMarker Protein MultiColor Stable II

**Code No:** DM660

**Lot No:** 009CE08

**Size:** 1.2 ml (120 mini-gel lanes)

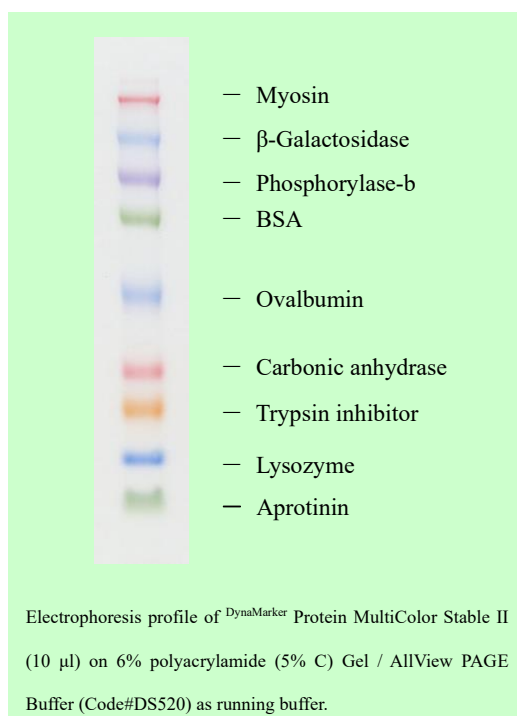
**Storage:** 4 °C

**Stability:** 12 months at 4 °C

**Storage Buffer:** Tris-HCl (pH6.8), EDTA, Glycerol, SDS

### Description

The DynaMarker Protein MultiColor Stable II is a pre-stained protein molecular weight marker. The marker has a remarkable feature that it is possible to store at 4 °C. The feature allow us to start electrophoresis with the marker, because it is always in a liquid state while stored at 4 °C. The DynaMarker Protein MultiColor Stable II consists of nine prestained proteins. Each of them are stained red, blue, purple, green or orange, ranging in apparent molecular weight from approximately 8 kDa to 230 kDa. The DynaMarker Protein MultiColor Stable II is suitable for visualizing proteins during electrophoresis without staining and for monitoring electrophoretic transfer onto membranes. The protein concentrations are optimized to give uniform band intensities. The marker is supplied in gel loading buffer for direct loading onto SDS-PAGE without heating or adding reducing agents.



### Protocol

1. Take the marker out of refrigerator.
2. Load 10  $\mu$ l for mini-gels or more for large size gels.
3. Load your samples.
4. Start electrophoresis.

**Note:** There is no need to heat or add reducing agents.

## Contents

| Protein                   | Apparent molecular weight (kDa) *                   |                                     |
|---------------------------|---|-------------------------------------|
|                           | Tris-Glycine-SDS buffer<br>(Laemmli running buffer) | AllView PAGE Buffer<br>(Code#DS520) |
| Myosin                    | 249   | 250                                 |
| $\beta$ -Galactosidase    | 137   | 141                                 |
| Phosphorylase-b           | 96  | 100                                 |
| BSA                       | 73  | 71                                  |
| Ovalbumin                 | 46  | 45                                  |
| Carbonic anhydrase        | 31  | 30                                  |
| Soybean trypsin inhibitor | 26  | 25                                  |
| Lysozyme                  | 18  | 17                                  |
| Aprotinin                 | 6.3   | 8.4                                 |

**Note:** As covalently bound dye affects protein mobility, each batch of prestained protein marker is calibrated against unstained standards. A prestained protein marker should be used for approximate molecular weight determination. For precise molecular weight determination use an unstained molecular weight marker.

\* : The apparent molecular weight values are lot specific and depends on the electrophoresis running buffer.

## Related Products

| Code  | Product Name        | Description  |
|-------|---------------------|--|
| DS520 | AllView PAGE Buffer | AllView PAGE Buffer is a new type of running buffer for SDS-PAGE electrophoresis. This buffer is possible to separate proteins with wide range of molecular weights in the basic Laemmli gel (Tris-HCl) similar to using “gradient gel”. |